

FAQ – industry sessions

1. PIP or no PIP – what is available in which room?

To be on the save side, please **always** provide both background branding for PIP and for full screen mode. Following please find an information in which rooms PIP is available and in which not.

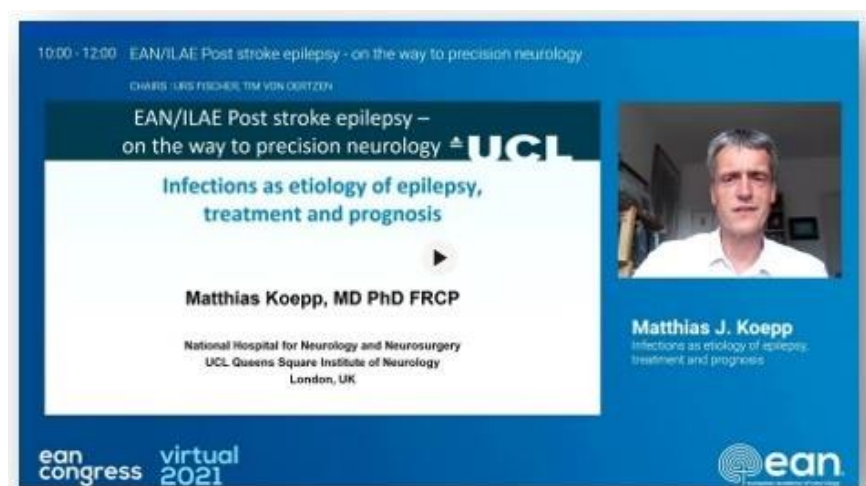
Session Room	Capacity	PIP	no PIP
Room Oslo	1100	✓	
Room Amsterdam	1100	✓	
Room Lisbon	660	✓	
Room Vienna	660	✓	
Room Helsinki	100		✓
Room Istanbul	100		✓
Room Budapest	230		✓
Room Seville	150		✓
Scientific Theater	40		✓

2. How does a standard EAN projection/slide look like?

The PIP on the in-room projection as well as in the live stream will look similar to 2021 with adapted congress design which is not yet finalized for 2022. The camera will show during the presentations the current speaker at the lectern and during discussion a wide angle of the stage.

Rooms without PIP on the in-room projection will display the presentations in full screen mode but the livestream will show the PIP as in the example below.

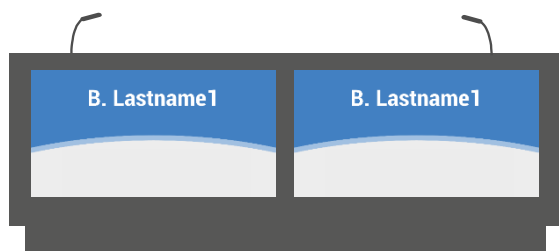
Example from 2021:



3. What are the features of the digital chair desk?

One digital chair table is equipped with one **(1) microphone per seat** and the incoming typed questions from the audience can be reviews on one **(1) screen per table**. In addition, each place on the chair tables will have a preview screen to follow the ongoing programme/presentation.

The front screens will show the faculty names, which can be allocated per seat via the control display based on the programme database.



4. How does Q&A and interactive voting work in a hybrid setting for participants?

Each room has a dedicated QR Code that leads onsite participants to a microsite of the virtual congress platform, that lists and enables the interactive services including the **Q&A function** and **Interactive Voting function**.

The QR Code will be shown on the main projection at the beginning of the session. The details on where the QR Code is published are still discussed, but as this system is used for all sessions – it will be shown on neuralgic places.

Onsite: Q&A is both possible virtually via the microsite and physically via microphones in the room.

Virtual: Q&A is possible via the Q&A function next to the livestream.

Forum talks: In the Scientific theater, questions are only possible physically by standing up and asking the question – as it is a small space (40 seats only), no microphones are provided.

Please note: Virtually incoming questions need to be handled by the chair (or any other dedicated person at the digital chair table) >please also see question 5.

5. How does Q&A work in a hybrid setting for the organizer?

Each industry partner receives a moderation link for each session in order to moderate the incoming questions, i.e., to release them. Only after approval by the moderator, the questions are visible to the chair/speaker at the chair table. Same system was already in use for the virtual congress 2021.

These virtually incoming questions must then be moderated by the chair or any other dedicated person on stage, i.e., read aloud so that the speaker can answer them accordingly.

6. Can we have the deep link to the session detail page?

Yes, as soon as your industry session is published, you will be able to retrieve the deep link to the session detail page. This is also the page where your session is livestreamed, and the recording of your session is available after the live session.

7. When is the link (for creating a QR Code) for standardized and individual Evaluation available?

The evaluation link for each session with individual and standardized evaluation will be available for your printing materials and usage **not before 17 Mai 2022**. After submitting your evaluation form to EAN please allow a couple of days for programming until you evaluation questions are shown at the link.

We very much recommend to not distribute the link(s) before the session(s) as the evaluation would theoretically work already.

It is recommended to include a QR Code in your closing slide.

8. How does evaluation work in a hybrid setting?

For onsite participants: Participants onsite shall scan the QR Code that links to your evaluation.

For virtual participants: The evaluation is available during the live stream immediately when the session starts. After the session, it is available on the session detailed page until the end of the congress – if not agreed differently. (The below examples are from 2021 – minor changes possible).

Satellite Symposium

Teva: Session title lorem ipsum

SESSION DETAILS

20.06.2021 | 15:00 – 16:00 | Main Auditorium | 380 Views

Topicname | Topicname | Topicname

Lorem ipsum dolor sit amet, consetetur sadipscing elitr, sed diam nonumy eirmod tempor invidunt ut labore et dolore magna aliquyam erat, sed diam voluptua. At vero eos et accusam et justo duo dolores et ea rebum. Stet clita kasd gubergren, no sea takimata sanctus est Lorem ipsum dolor sit amet. Lorem ipsum dolor sit amet, consetetur sadipscing elitr, sed diam nonumy eirmod tempor invidunt ut labore et dolore magna aliquyam erat, sed

Disclaimer

Lorem ipsum dolor sit amet, consetetur sadipscing elitr, sed diam nonumy eirmod tempor invidunt ut labore et dolore magna aliquyam erat, sed diam voluptua. At vero eos et accusam et justo duo dolores et ea rebum. Stet clita kasd gubergren, no sea takimata ... sanctus est Lorem ipsum dolor sit amet. Lorem ipsum dolor sit amet, consetetur

[Show more](#)

Telnet Tweet Share Link

Add to my programme

Download calendar file

Evaluate this session

Watch Live Session

Live Stream

Other Live Sessions Pin to group

Hall A1 | 10:00-10:45 | EW010 - PK/PD in special populations: do we need to approach neonates, children and pregnant women differently?

Chairs: Nolan Everson
Emilia Dalo

Presentation slides

Presenters video

Prof. Arturo Casadevall

Sepsis in low- and middle income countries: changing epidemiology and guidelines

ean

Q&A Voting Evaluation

Max Mustermann

Ask a question...

CLEAR SUBMIT

Jeff 10 hours ago

Do you think you can differentiate between small airways disease due to remodelling in asthma vs that caused by smoking or viral illnesses on CT? Do you think that the initial insult is constrictive bronchiolitis

Susanne 10 hours ago

9. Is it possible for us to use our own interactive voting (polling) options?

Hyperlinks and internet connections within the presentation will be removed automatically from our presentation management system for production security reasons of the entire congress.

The interactive voting system connects the onsite participants in the room with the online livestream viewers. The combined result will be displayed embedded in the presentation management system.

Therefore, an external interactive voting system is not recommended.

10. Is there a possibility to upload/change presentations onsite, especially after the slide/technical rehearsal?

To ensure a smooth technical process, we encourage you/the faculty to upload their presentations prior to the congress via the group upload. However, a speakers' service center (SSC) will be available also on site.

For presentations with voting questions (polling) it is recommended to visit the SSC before the rehearsal slot and/or session to give final instructions and to check the functionality. Please inform your faculty accordingly.

Opening hours of the SSC:

24.6.2021	Friday	16:00 – 19:00
25.6.2021	Saturday	07:30 – 19:00
26.6.2021	Sunday	07:30 – 19:00
27.6.2021	Monday	07:30 – 19:00
28.6.2021	Tuesday	07:30 – 15:00

The submission deadline via the group upload is 22 June 2022. If you upload your presentation before 22 June 2022 (12:00 CEST) MEEvents will also check your presentation manually for any technical issues.